

# Shellder: Eggshell Powder

and its tons of functionality



- **Approximately 3 – 4 million tons of eggshells are wasted each year in Indonesia**

AND..

Approximately on average,

• hotels produced 6.6 Kg

eggshells everyday only from

breakfast



# IMPACTS



**Burn it?**

**Toss it?**

**So, What**

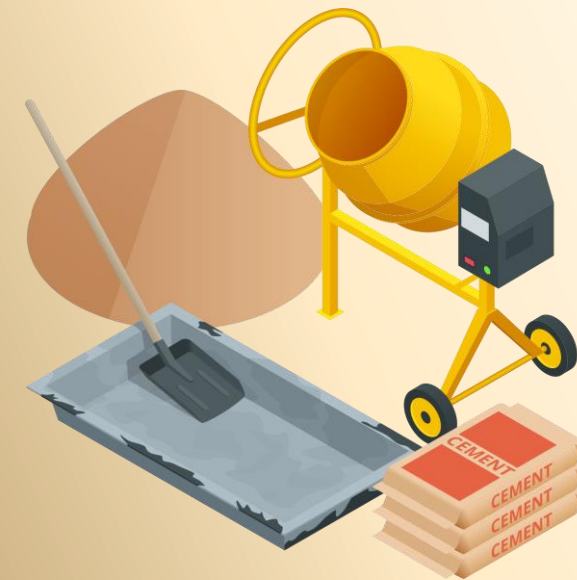
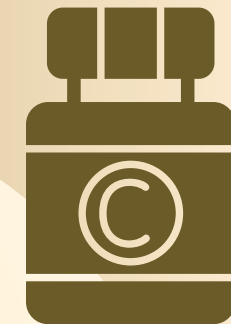
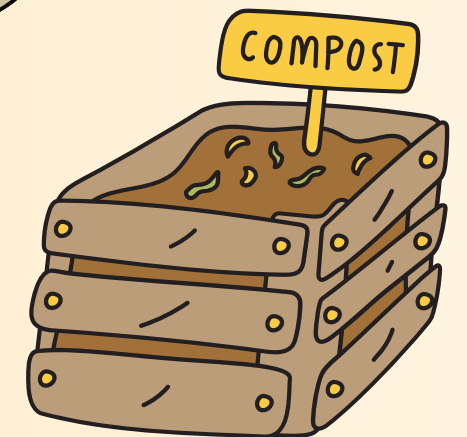
**Now?**  
Put it in a junk?

**Ditch**

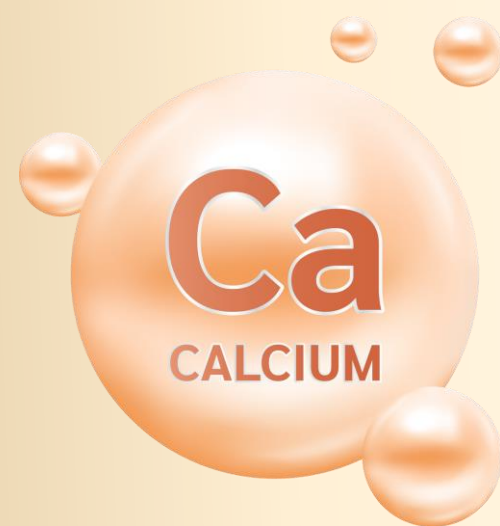
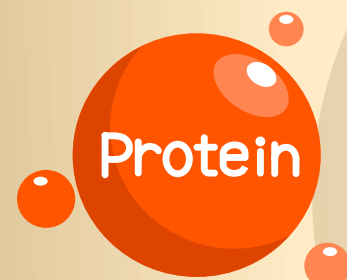


# Eggshell Powder

## Functions



## Contents



# Eggshell Powder

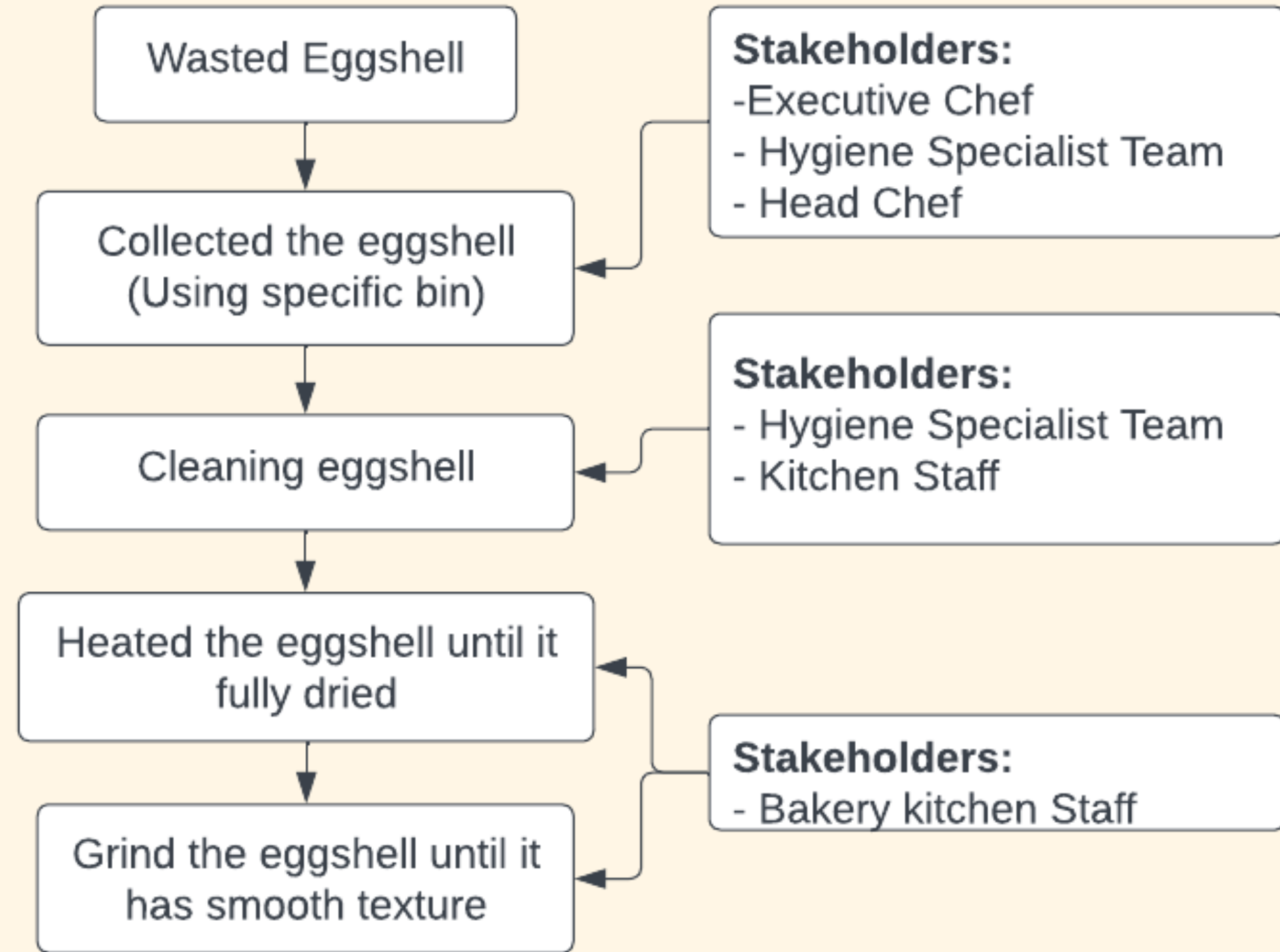
Bath Soap

Eggshell Flour



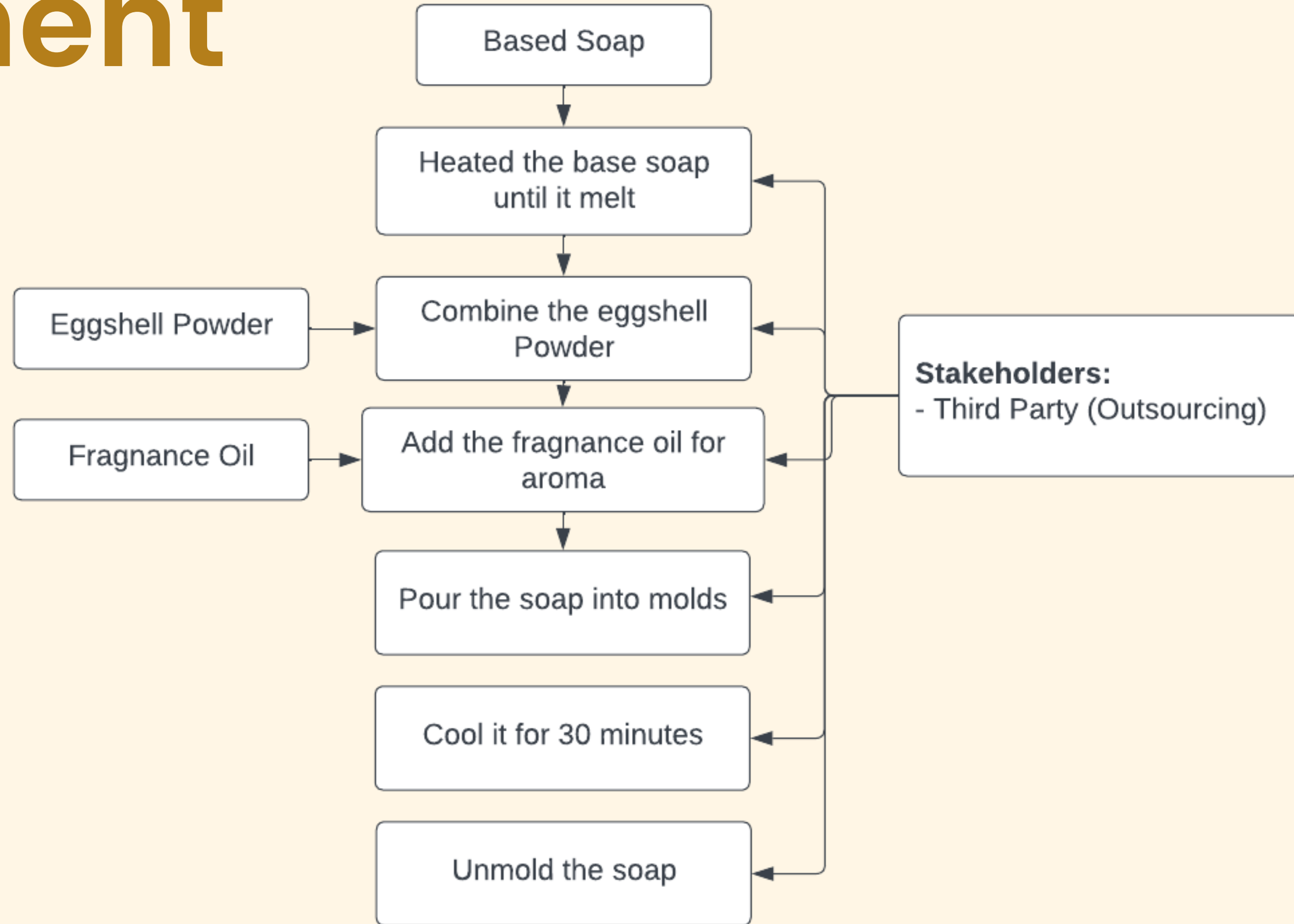
# Implement

# It!





# Implement It!



# TIMELINE



Erasmus+ Eggshell soap scrub BINUS UNIVERSITY IN2FOOD

### Eggshell and the concern about it

- Eggshell waste has been ranked as the 15th major food industry pollution problem by the Environmental Protection Agency.
- In 2018, eggshell as much as 8.58 million tons of eggshell are being discarded.
- Eggshell are known for its calcium content, make up for about 33% per 1 gr of eggshell

### How to make the soap??

### Our scrub benefit

- Good for your skin !**  
We use additional ingredients that had a natural exfoliating effect on your skin
- Good for environment !**  
We reuse eggshell as one of the main material in soap to reduce food waste
- Low cost !**  
Without adding material costs, we add exfoliating function to your soap





Hotels, Restaurants!  
**LET'S IMPLEMENT  
THIS SOLUTION!**



**Leading Expert  
Consultant**

**Restaurant**

**Hotel Functions  
Eggshell Products**

**Hotels**

**In 3 years time,**

**Café Industry**

**OEM**

**(Original Equipment Manufacturer)**

# IMPORTANT NEEDS!

**Eggshells Hotel Data**

**Trusted Partners**

**Promotions**

**Functionality Campaign**





Together with Shellder  
**REPURPOSE YOUR  
EGGSHELLS!**